

# QUICK START GUIDE

## Automatic calf feeder 2.2 Dosing device powder

This document provides a quick overview of how to set up a powder additive doser and the corresponding additive plans.

**1** Clean dosing device manually

**2** Unplug calf feeder

**3** Lay and connect control cable \*

**4** Remove cover plate from fly screen  
If available

**5** Attach retaining bolts \*

**6** Hang in the dosing device

**7** Connect the control cable with dosing device  
and plug the calf feeder in again

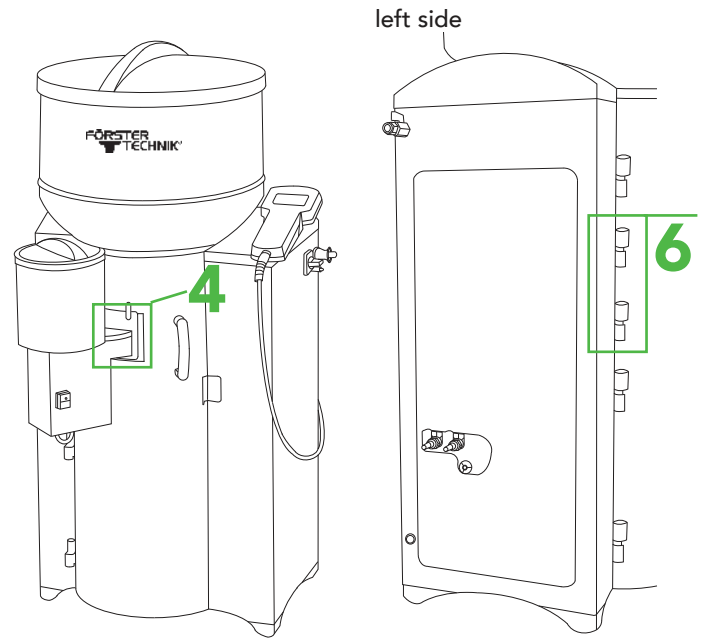
**8** Register the dosing device

Turn off feeder → keep pressed → turn on the feeder and hold button until the Setup menu is displayed.

→ Equipment

...
▶ Additive dispenser 1 [ yes ]
Additive dispenser 2 [ yes ]
....

\* only for retrofitting

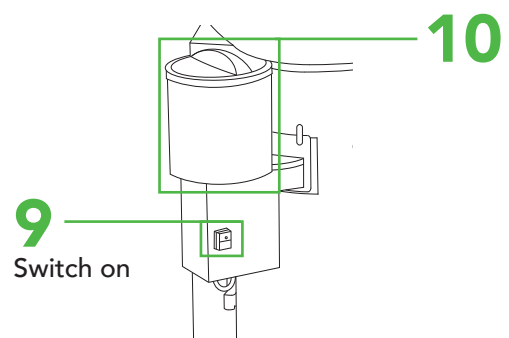


**9** Activate vapor screen  
If available

**10** Filling the dosing device

- a) Add an additive to the container
- b) Dispense a small amount of additive, to fill the dosing unit

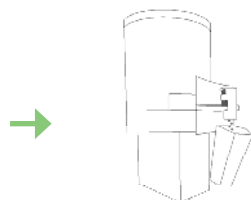
▶ Diagnosis → ▶ motors → ▶ Additive 1 → Enter



**11** Calibration

During initial start-up calibrate at least 3 times

▶ Calibration → ▶ components → additive → start?



Attention! Output in several small quantities.



Weigh the dispensed quantity on a separate scale.

set	20 g
actual	X g

X = Adjust the current value according to your measurement.

# QUICK START GUIDE

Automatic calf feeder - 2.2 dosing device powder

## 12 Create plans



a) Medicine (Additive in feed) to

→ **Medicine prescr.** →

< Prescription 1 - 4 >

Days from 0.0

P 1: 5 2.0

P 2: 0 0.0

Duration 5

Dosage [ ]

Distribution [ ]

Dispenser [ ]

Duration and additive quantity

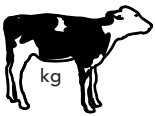
< Prescription 1 - 4 >

	Days	from	till
P 1:	5	2.0	2.0
P 2:	0	0.0	0.0
Duration	5		

Final value in g  
Start value in g  
Length of period

→ Dosage [ ]

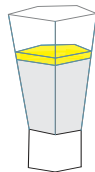
[ g/100kg ]  
According to the animal's weight



[ g/day ]  
As daily quantity per animal

	1	2	3	4	5	
6	7	8	9	10	11	12
13	14	15	16	17	18	19
20	21	22	23	24	25	26
27	28	29	30	31		

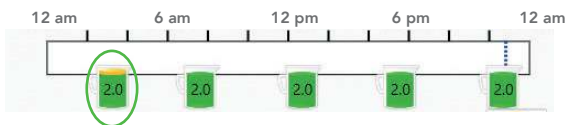
[ g/l ]  
According to the feed quantity



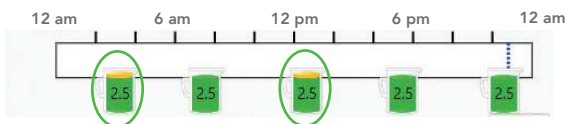
▲ Additive +  
1 liter feed

→ Distribution [ ]

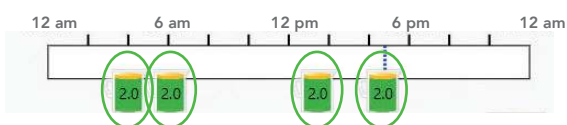
[ once ] a day



[ twice ] a day



[ equal ] distributed



→ Dispenser [ ]

Chose the corresponding dispenser.

b) Electrolyte (Additive in water)

→ **Electrolyte prescr.** →

Quantity [ ] g/l

Duration [ ] days

Electrolyte [ ] l

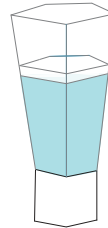
Feed [ ] l

Waiting time 02:00

Dispenser [ ]

→ Quantity [ ] g/l

→ Duration [ ] Days

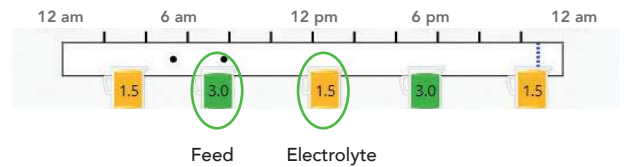


▲ Electrolyte +  
1 liter water

		1	2	3	4	5
6	7	8	9	10	11	12
13	14	15	16	17	18	19
20	21	22	23	24	25	26
27	28	29	30	31		

→ Electrolyte [ ] l Quantity of electrolyte / meal

→ Feed [ ] l Quantity of feed / meal



→ Waiting time 02:00

Time between feed and electrolyte, which the calf must wait until it can consume feed/electrolyte again.

→ Dispenser [ ]

Chose the corresponding dispenser.

## 13 Allocate the prescription plans



a) → Animal

→ **Additive** → Enter

dispensed → P1 / P2 / P3 / P4 / EL

b) → Group

→ **Additive 1** → Enter

dispensed → P1 / P2 / P3 / P4 / EL

c) Blocking the residual portion

→ **Animal** or **Group**

→ **blocked** → Enter → Yes