

QUICK START GUIDE

Automatic calf feeder - combi

1.1 Installation checklist

This document provides a brief overview of the things that need to be taken into account when commissioning a feeder for the first time.

1 Connect water

2 Connect power

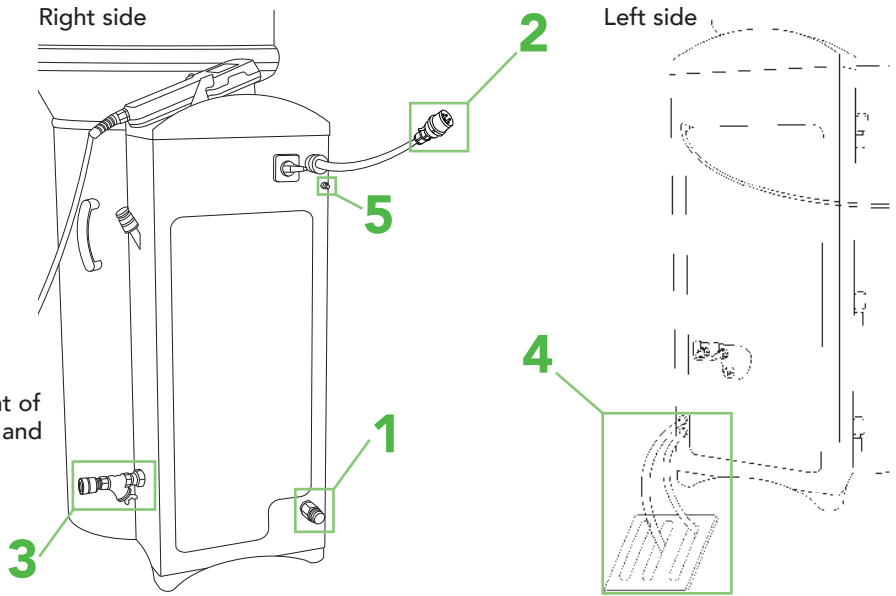
3 Connect milk tank

Place milk tank next to the feeder on same or on higher level

4 Provide draining options

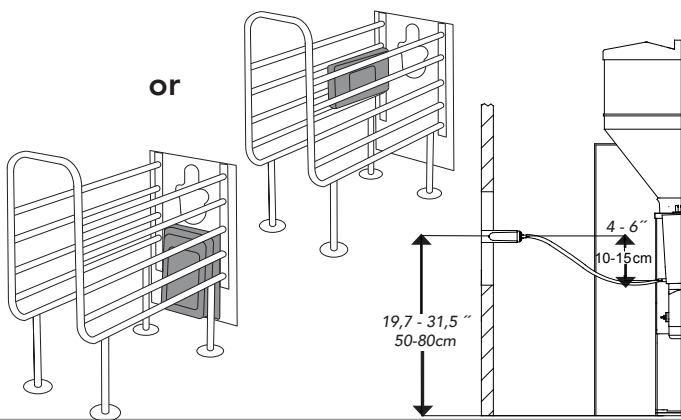
1 on the left side of the feeder, 1 in front of the feeder in the middle of the housing and 1 at every feeding station

5 Establish ground connection



6 Mount and connect raceway, antenna and suction point

TIP: For more details, see the corresponding assembly instructions.



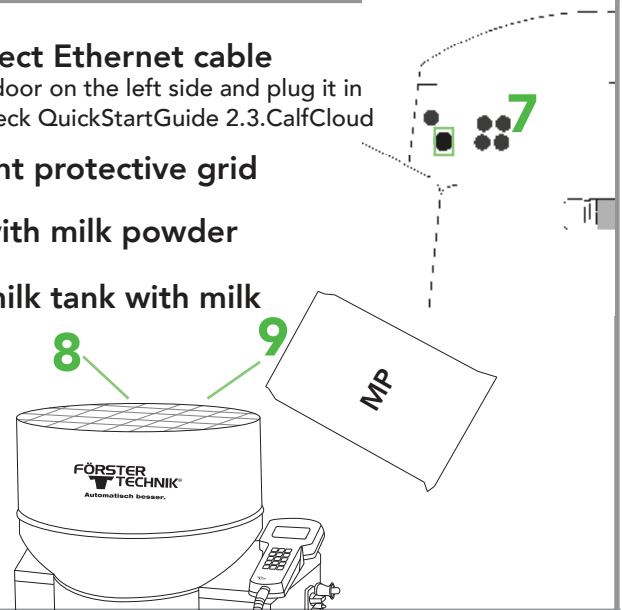
7 Connect Ethernet cable

Open door on the left side and plug it in
TIP: check QuickStartGuide 2.3.CalfCloud

8 Mount protective grid

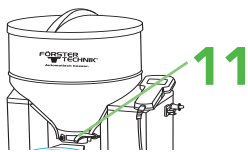
9 Fill with milk powder

10 Fill milk tank with milk



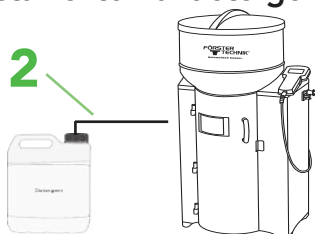
11 Switch on vapour screen for powder outlet *if available*

TIP: The switch can be found on the main board of the calf feeder (*Open the plate on the back*)

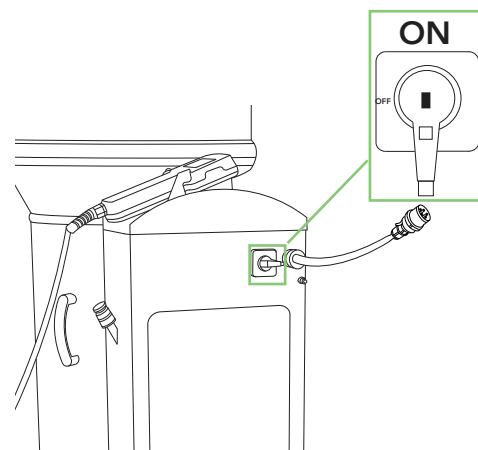


12 Install external detergent supply

12



13 Turn the automatic feeder on



QUICK START GUIDE

Automatic calf feeder combi - 1.1 Installation checklist

First settings at the Handheld

14 Enter basic settings (date & time)

This is automatically displayed after switching on the machine

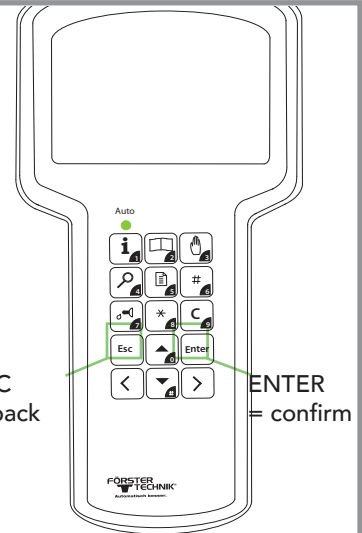
15 Fill the heat exchanger

Fault message HE not filled is automatically displayed

press  → HE is filled now

16 Reinstall everything

 ▶ device data → ▶ new installation →  confirm everything



17 Setup configuration

Turn off the feeder → Keep  pressed

→ Turn on the feeder and hold button until the **setup menu** is displayed.

a) Read in ID-chip

[**setup menu**] →  → 

b) Check / change Setup settings

Setup
language: [English]
time/date
machine
equipment
identification
ID-chip
calibration scale
stations
terminal
communication
SD card
service

c) Adjust the calibration scale if available then exit setup

18 Calibration

TIP: check QuickStartGuide 1.3 & 1.4 Calibration

Calibrate all existing components at least 3 times during initial commissioning.

Water, MP, milk, additives

 ▶ calibration → ▶ components

19 Cleaning before commissioning

TIP: check QuickStartGuide 1.6 & 1.7 Cleaning

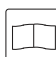
Fill up detergent & clean

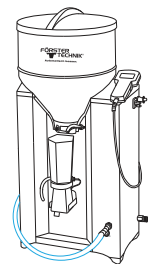
Check cleaning settings

 ▶ cleaning → ▶ settings

Attention: detergent quantity is set to 0ml by default

Circuit cleaning

 ▶ cleaning
→ ▶ circuit cleaning
→ ▶ start?




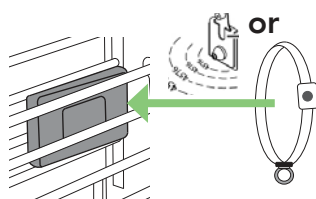
20 Set feeding plans, portion settings and operating mode


TIP: check QuickStartGuide 1.2 feeding plan

21 Reading in transmitters to store them in the system

TIP: check QuickStartGuide 1.8 animal management

 ▶ animal management → ▶ transmitter
→ ▶ new Hold a transmitter next to the antenna in the raceway.




▶ Create new no. X for animal X? → 

22 Register animals to allow feeding

TIP: check QuickStartGuide 1.8 animal management

Besides a manual registration, it is possible to register calves automatically to the calf feeder.

automatically

 ▶ animal management → ▶ register
→ ▶ automatic → 