

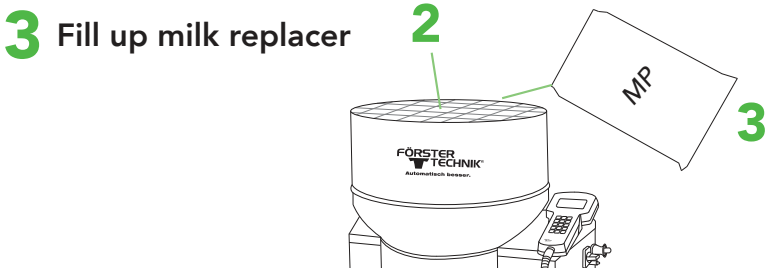
QUICK START GUIDE

Automatic calf feeder - Powder

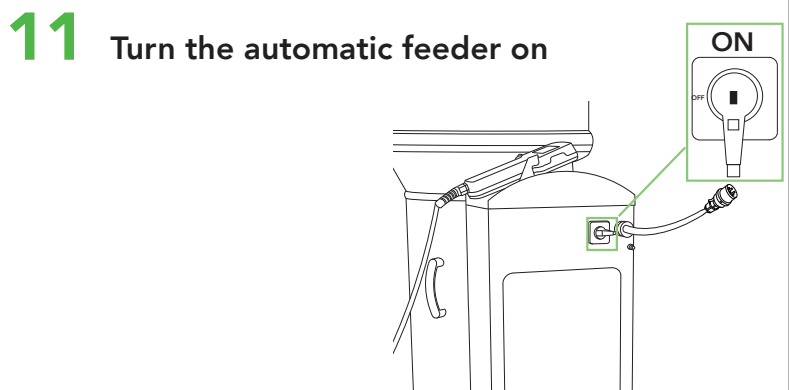
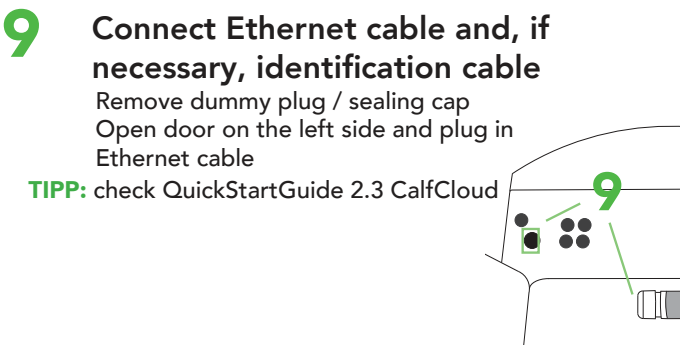
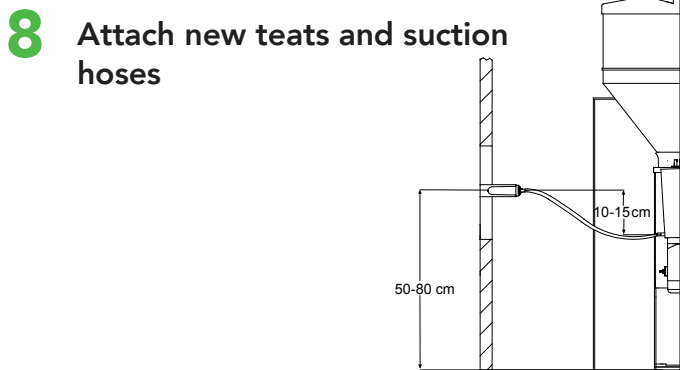
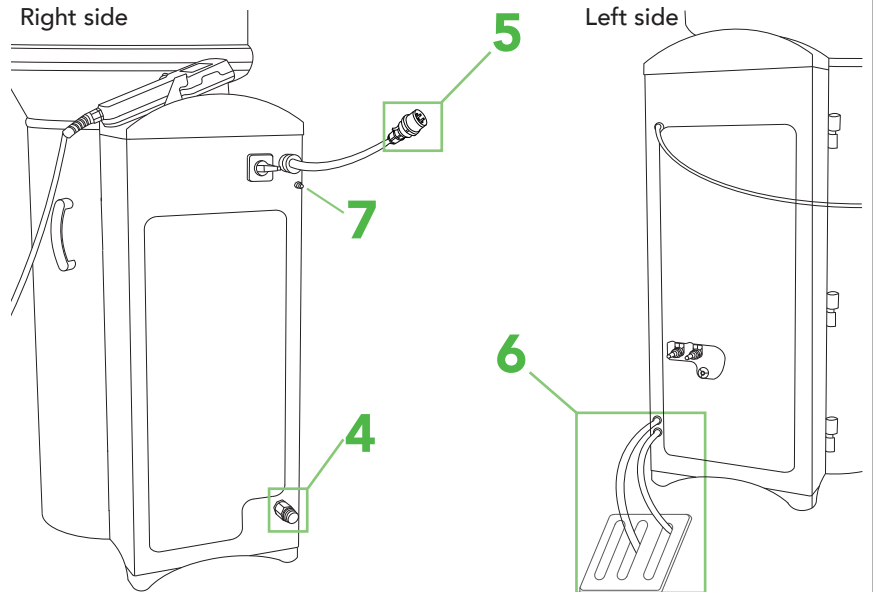
1.12 Recommissioning

This document gives a brief overview of the most important steps when recommissioning a feeder.

- 1 Remove the protective cover**
Place the feeder in the desired position and clean the outside with a damp cloth.
- 2 Mounting the protective grid/cover of the powder hopper**



- 4 Connect water**
Use a new hose!
- 5 Connect power**
- 6 Provide draining options**
 - On the left side of the feeder
 - In front of the feeder in the middle of the housing
 - At every feeding station
- 7 Establish potential equalisation**



QUICK START GUIDE

Automatic Calf Feeder - 1.12 Recommissioning

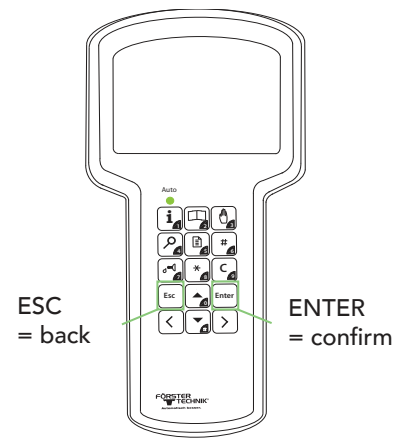
First settings at the Handheld

12 Enter basic settings (date & time)

13 Fill the boiler

Fault message boiler not filled is automatically displayed

press  → Boiler is filled now

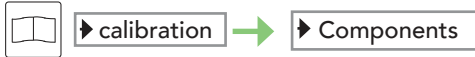


14 Calibration

TIPP: check QuickStartGuide 1.3 & 1.4 Calibration

Calibrate all existing components at least 3 times during initial commissioning.

Water, MP, additives, detergent



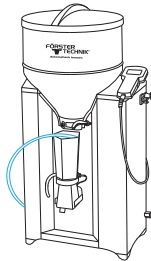
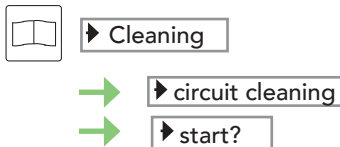
15 Cleaning before recommissioning


TIPP: check QuickStartGuide 1.6 & 1.7 Cleaning

Check cleaning settings



Start circuit cleaning



 After cleaning, check all components again for leaks.