

# QUICK START GUIDE

## Automatic calf feeder - combi

### 1.12 Recommissioning

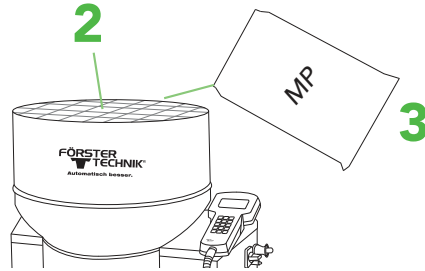
This document gives a brief overview of the most important steps when recommissioning a feeder.

#### 1 Remove the protective cover

Place the feeder in the desired position and clean the outside with a damp cloth.

#### 2 Mounting the protective grid/cover of the powder hopper attachment

#### 3 Fill up MP



#### 4 Connect water

Use a new hose!

#### 5 Connect power

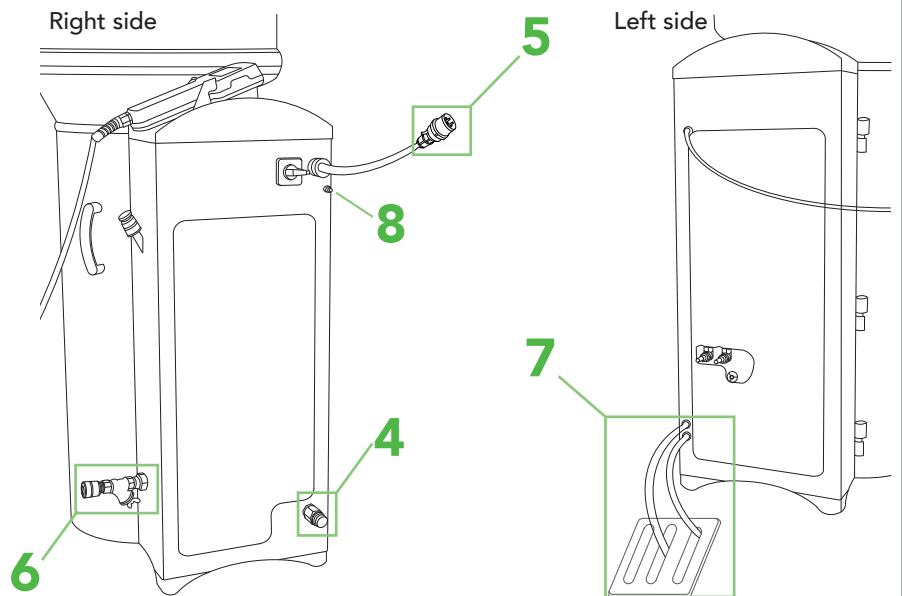
#### 6 Connect milk tank

Place milk tank next to the feeder on same or on higher level.  
Use a new hose!

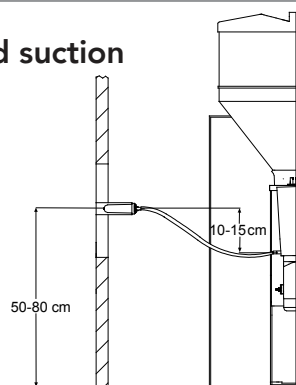
#### 7 Provide draining options

- On the left side of the feeder
- In front of the feeder in the middle of the housing
- At every feeding station

#### 8 Establish potential equalisation



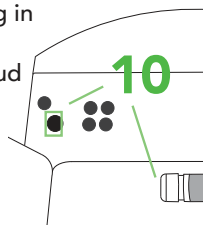
#### 9 Attach new teats and suction hoses



#### 10 Connect Ethernet cable and, if necessary, antenna cable

Remove dummy plug / sealing cap  
Open door on the left side and plug in Ethernet cable

TIPP: check QuickStartGuide 2.3 CalfCloud

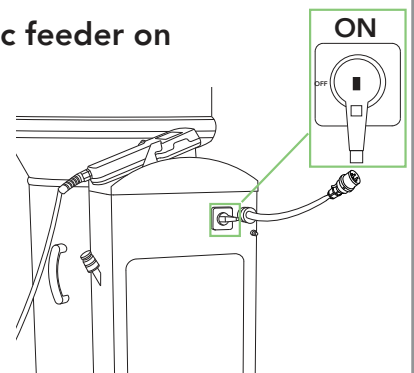


#### 11 Install external detergent supply

Check storage level and re-fill if necessary.



#### 12 Turn the automatic feeder on



# QUICK START GUIDE

Automatic Calf Feeder - 1.12 Recommissioning

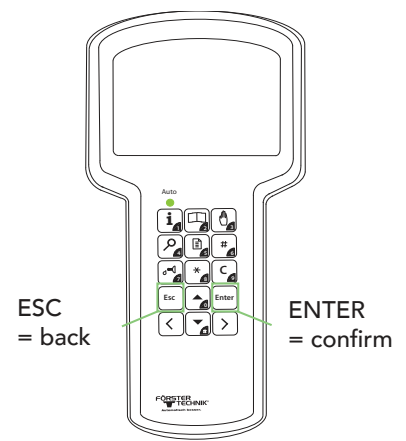
## First settings at the Handheld

**13** Enter basic settings (date & time)

**14** Fill the heat exchanger

Fault message HE not filled is automatically displayed

press  → HE is filled now




**15** Calibration

**TIPP:** check QuickStartGuide 1.3 & 1.4 Calibration

Calibrate all existing components at least 3 times during initial commissioning.

Water, MP, milk, additives, detergent

 ▶ calibration → ▶ Components


**16** Cleaning before recommissioning

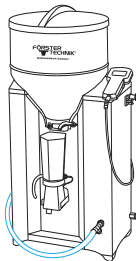
**TIPP:** check QuickStartGuide 1.6 & 1.7 Cleaning


Check cleaning settings

 ▶ Cleaning → ▶ settings *Attention: detergent quantity is set to 0ml by default*

Start circuit cleaning

 ▶ Cleaning  
→ ▶ circuit cleaning  
→ ▶ start?



 After cleaning, check all components again for leaks.